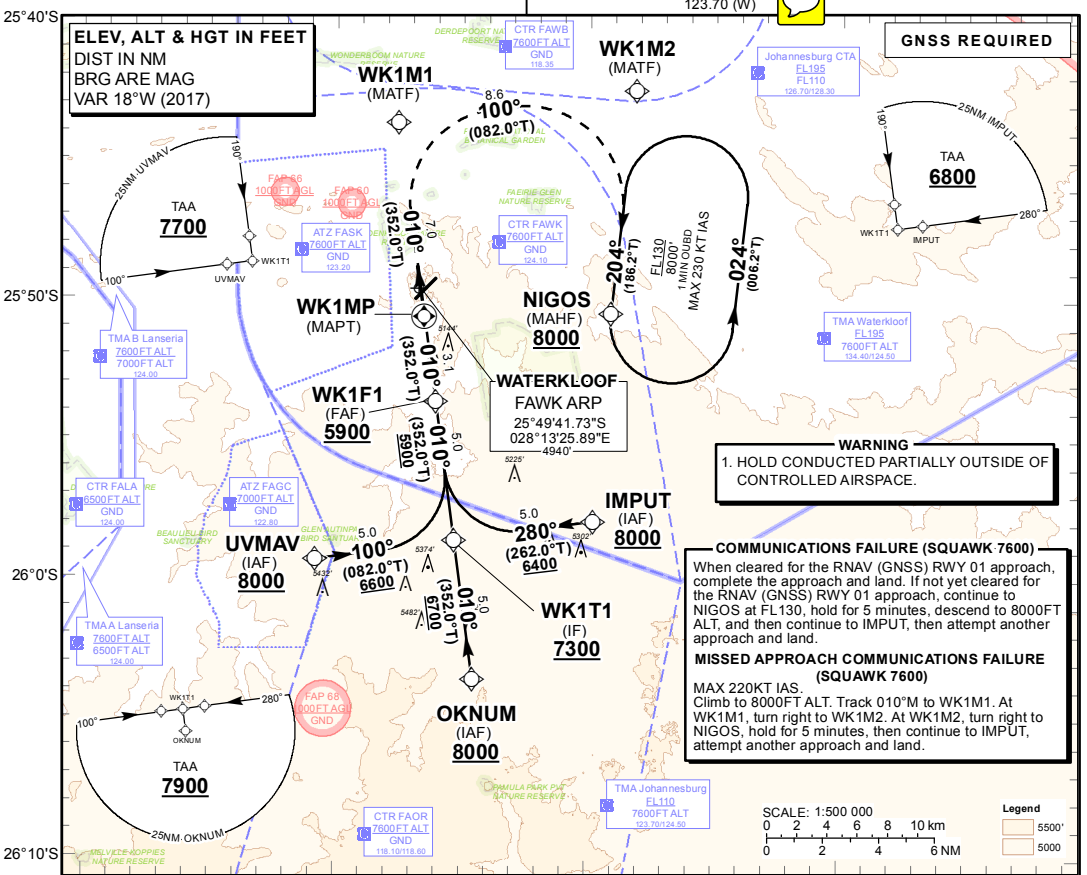


INSTRUMENT APPROACH CHART - ICAO

AERODROME ELEV 4940' HEIGHTS RELATED TO THR RWY 01 - ELEV 4876'

WATERKLOOF GND: 121.85
 TWR: 124.10
 APP: 124.50 (S)
 124.50 (E)
 124.50 (E)
 123.70 (W)

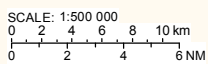
WATERKLOOF RNAV (GNSS) RWY 01 CAT A - D



WARNING
 1. HOLD CONDUCTED PARTIALLY OUTSIDE OF CONTROLLED AIRSPACE.

COMMUNICATIONS FAILURE (SQUAWK 7600)
 When cleared for the RNAV (GNSS) RWY 01 approach, complete the approach and land. If not yet cleared for the RNAV (GNSS) RWY 01 approach, continue to NIGOS at FL130, hold for 5 minutes, descend to 8000FT ALT, and then continue to IMPUT, then attempt another approach and land.

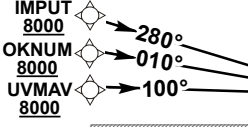
MISSED APPROACH COMMUNICATIONS FAILURE (SQUAWK 7600)
 MAX 220KT IAS. Climb to 8000FT ALT. Track 010°M to WK1M1. At WK1M1, turn right to WK1M2. At WK1M2, turn right to NIGOS, hold for 5 minutes, then continue to IMPUT, attempt another approach and land.



Legend
 5500'
 5000'

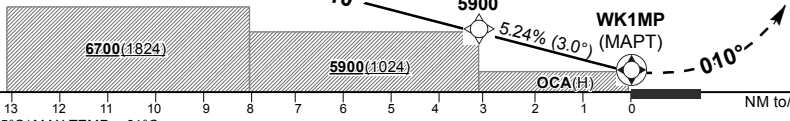
DIST (NM) to WK1MP	3.1	3.0	2.0		
ADVISORY ALT (HGT)	5900 (1024)	5870 (994)	5560 (684)		

**TRANSITION ALT 8000
 TRANSITION LEVEL ATC**



MISSED APPROACH:
 MAX 220KT IAS. Climb to 8000FT ALT. Track 010°M to WK1M1. At WK1M1, turn right to WK1M2. At WK1M2, turn right to NIGOS for Radar Vectors to IMPUT. Contact FAOR Approach.

CHANGE: NM distances visibility



RDH 50

THR ELEV 4876

MIN TEMP: -5°C / MAX TEMP: +61°C

Straight-in Approach	OCA (H)					GS	KT	80	100	120	140	160	180
	LNVA	A	B	C	D								
	LNVA/VNA	2.5%	5430 (554)	5430 (554)	5430 (554)	5430 (554)	WK1F1 to WK1MP	M:S	2:19	1:51	1:33	1:19	1:09
						Rate of descent	FPM	419	524	629	733	838	943
Circling		At the discretion of the pilot in command.					NOTE:						
							1. Rate of descent is 5.24%.						
							2. MAPT at THR.						
							3. Turn prior MAPT prohibited.						
							4. BaroVNAV operations not authorised below -5°C and MAX VPA 3.5° temperature +61°C.						